



Major Storm System

March 14, 2025
1:16 PM

Strong Winds, Severe Storms, and Significant Fire Danger

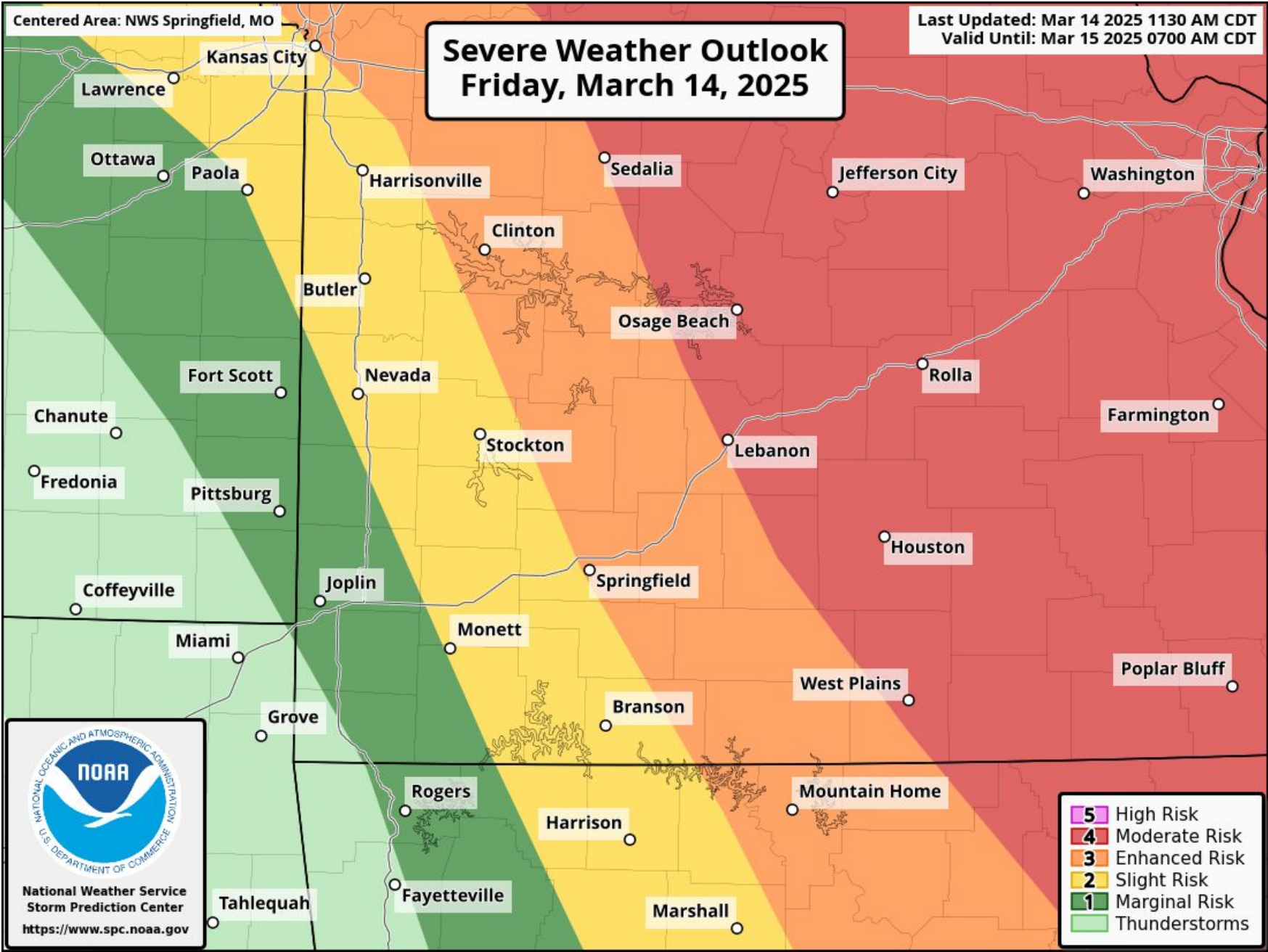
Key Messages

- Severe thunderstorm risk increases from west to east today, culminating in a Moderate (level 4 of 5) Risk in the eastern Ozarks.
- Very windy (outside of storms), with widespread damaging winds of 50 – 60+ mph.
- Low relative humidities leading to widespread significant to extreme fire weather potential.

NEW

What Has Changed

- Severe weather risk is now further west.
- Minor changes to hazard expectations.



National Oceanic and
Atmospheric Administration
U.S. Department of Commerce

National Weather Service
Springfield, MO



Hazards Timing

March 14, 2025
1:16 PM

Strong Winds, Severe Storms, and Critically Extreme Fire Danger

Hazards	Today				Saturday	
	1pm	4pm	7pm	10pm	1am	4am
Wind Gusts	South 40 to 60+ mph	Southwest 40 to 60+ mph			Southwest 35 to 45 mph	Southwest 25 to 35 mph
Strong to Severe Thunderstorms	Storms Developing	Marginal & Slight Risk (1 & 2 of 5)	Enhanced & Moderate Risk (3 & 4 of 5)	Storms Exiting		
		I-49 to Hwy 63	Hwy 63 and east			
Fire Weather	Red Flag Warning Relative Humidity: 10-25%					



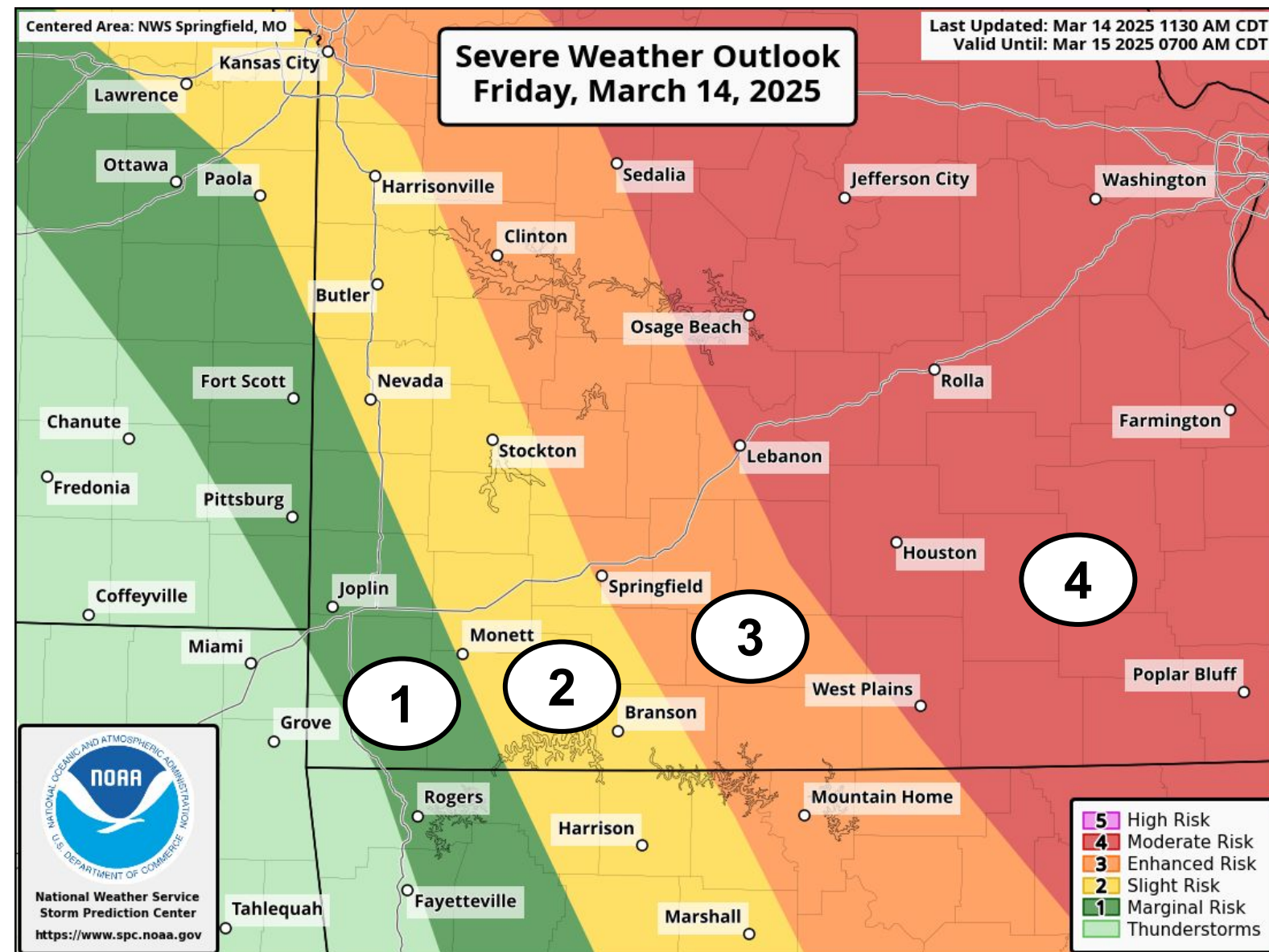


Severe Weather Potential

March 14, 2025
1:16 PM

All hazards possible with damaging winds the greatest threat

- Severe weather is expected through 10 PM.
- Storms will move west to east, and severe risk increases to the east.
- ◆ Large hail up to baseball size
- ◆ Damaging winds greater than 80 mph
- ◆ Tornadoes (some strong) are possible, especially in the Enhanced (3; Orange) and Moderate (4; Red) areas.



Storm Window: 4 pm – 10 pm



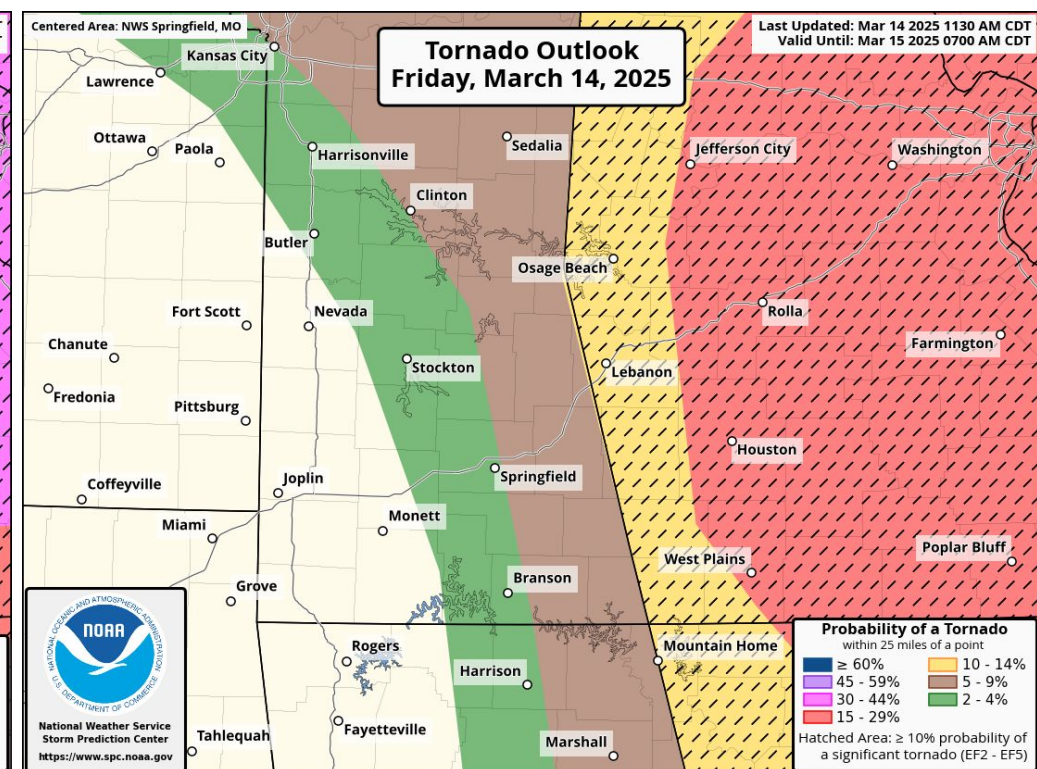
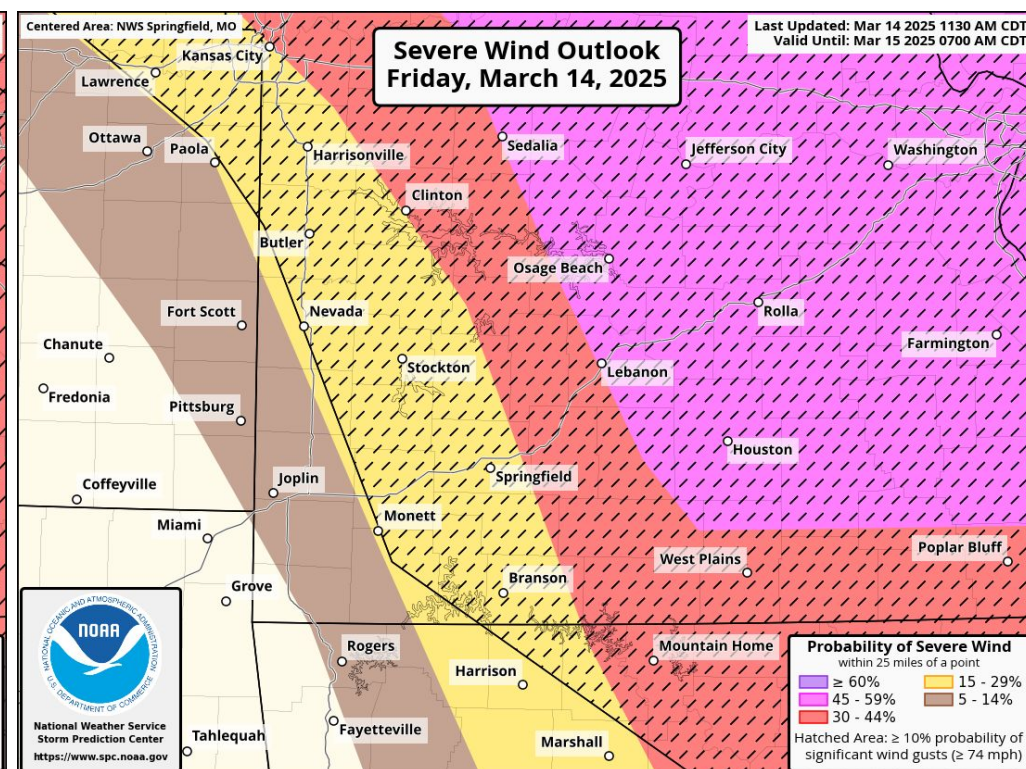
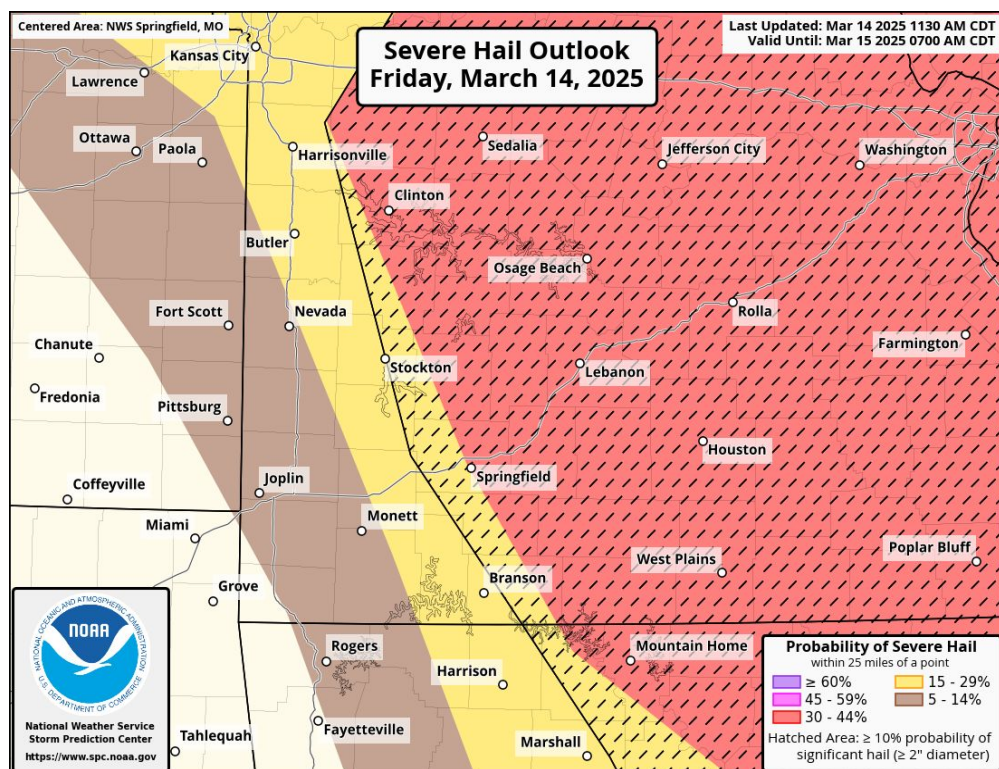
National Oceanic and
Atmospheric Administration
U.S. Department of Commerce

National Weather Service
Springfield, MO



SPC Outlook Hazards

March 14, 2025
1:16 PM



Hail Probability

Wind Probability

Tornado Probability

- Large hail up to baseball size
- Damaging winds greater than 80 mph
- Tornadoes (some strong) are possible, especially in the Enhanced (3; Orange) and Moderate (4; Red) areas



National Oceanic and
Atmospheric Administration
U.S. Department of Commerce

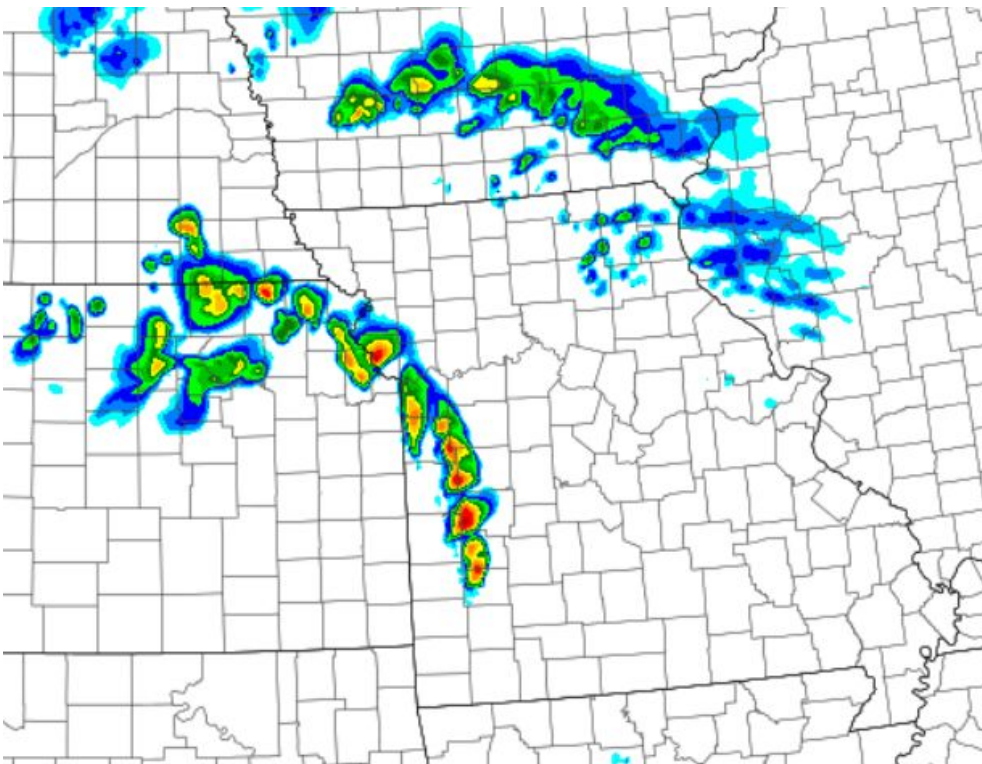
National Weather Service
Springfield, MO



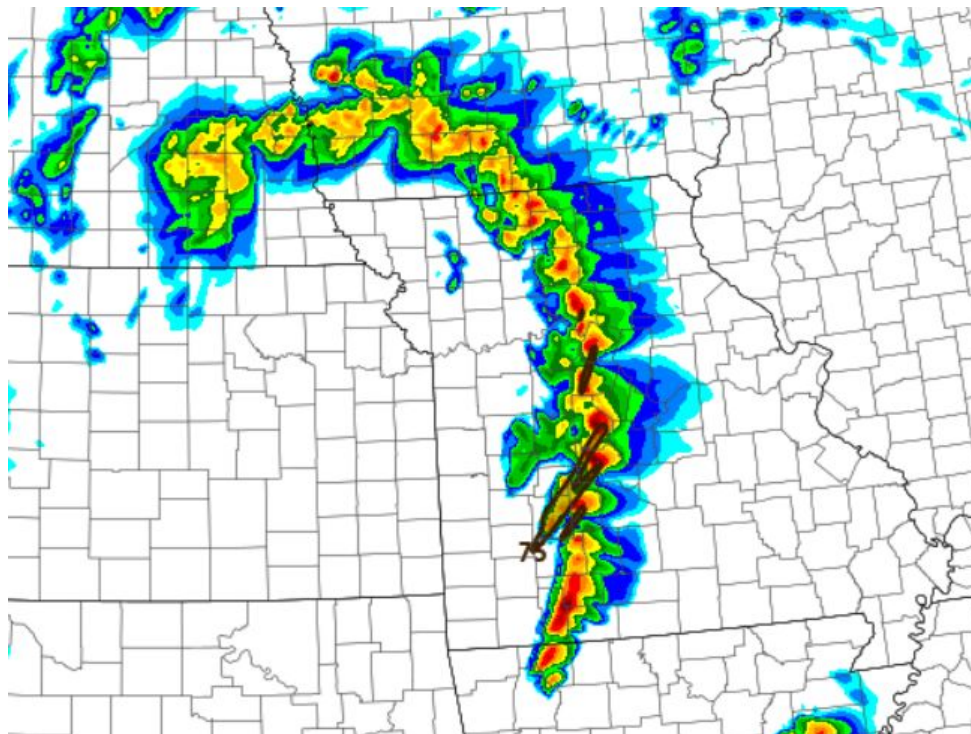
Model Timeline

March 14, 2025
1:16 PM

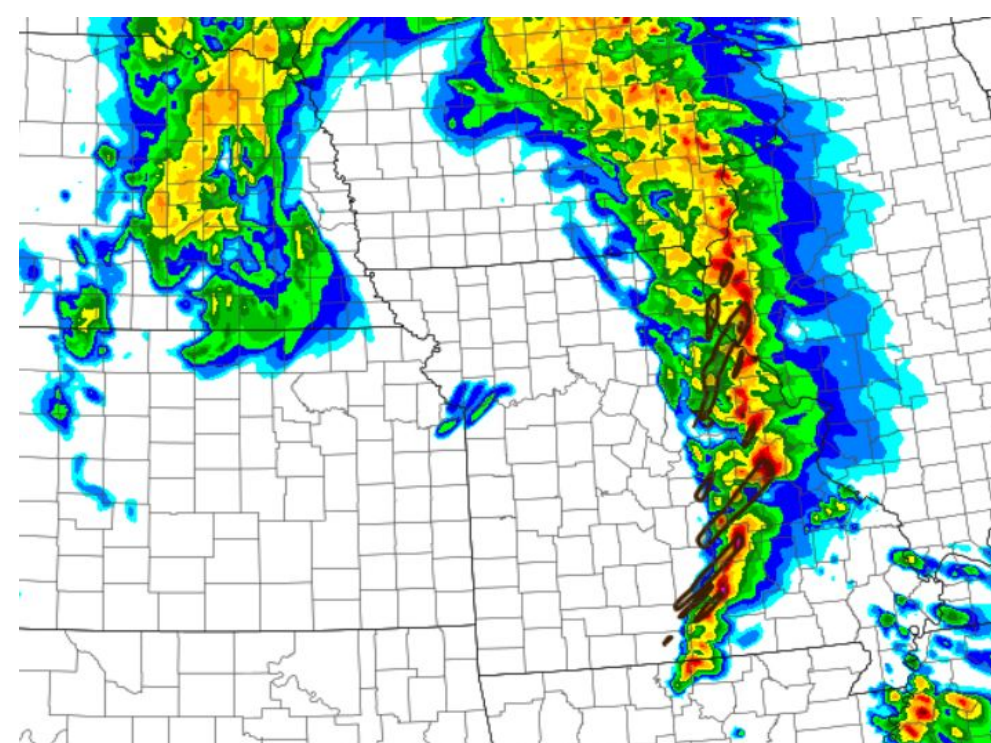
Forecast Radar 1pm – 3pm



Forecast Radar 3pm – 5pm



Forecast Radar 5pm – 7pm



Hail size up to
baseballs



Damaging wind
gusts up to 80 mph



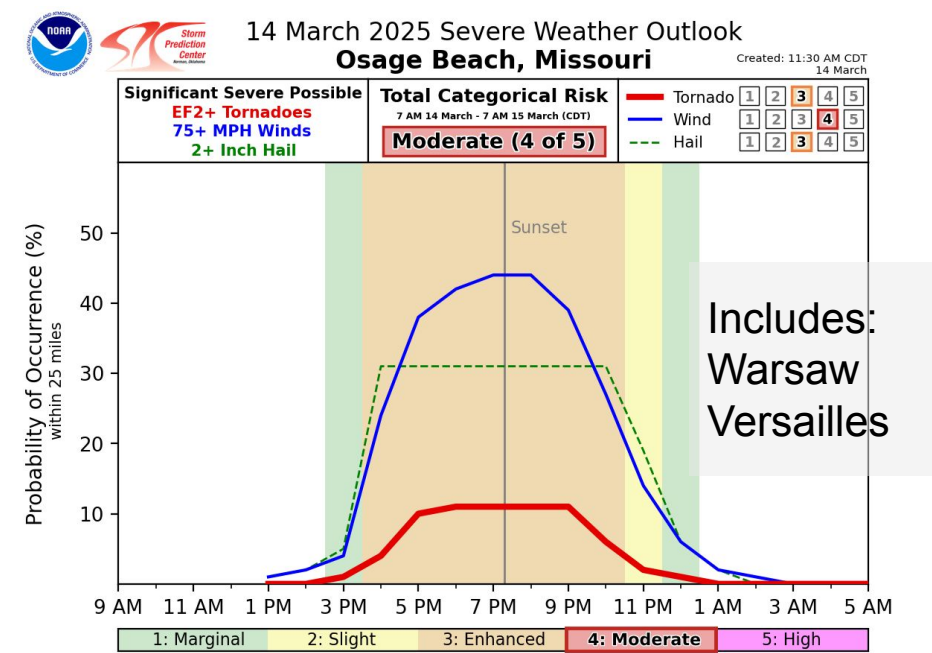
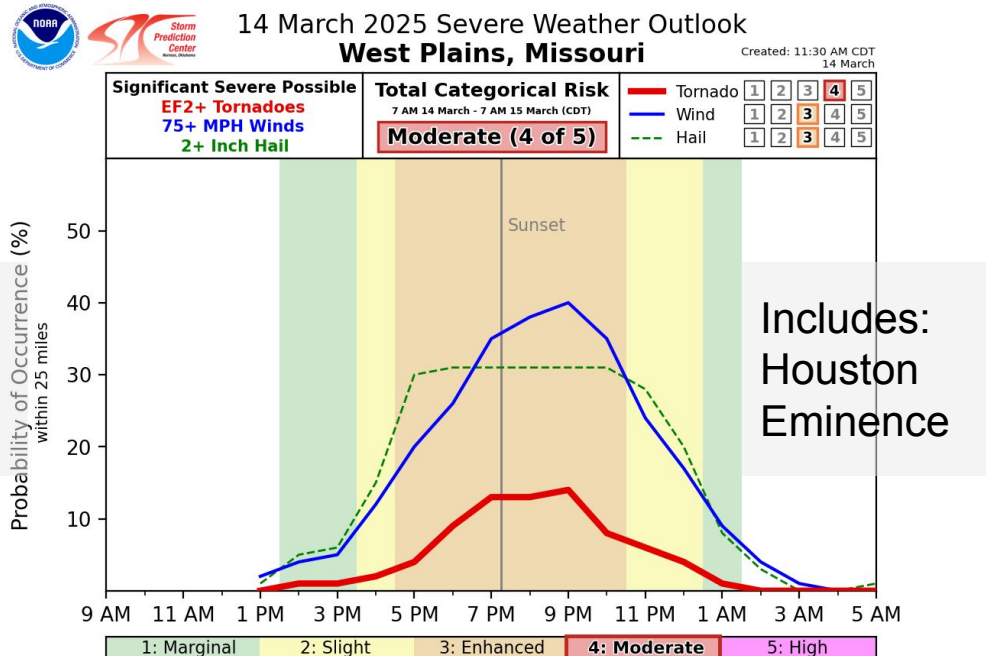
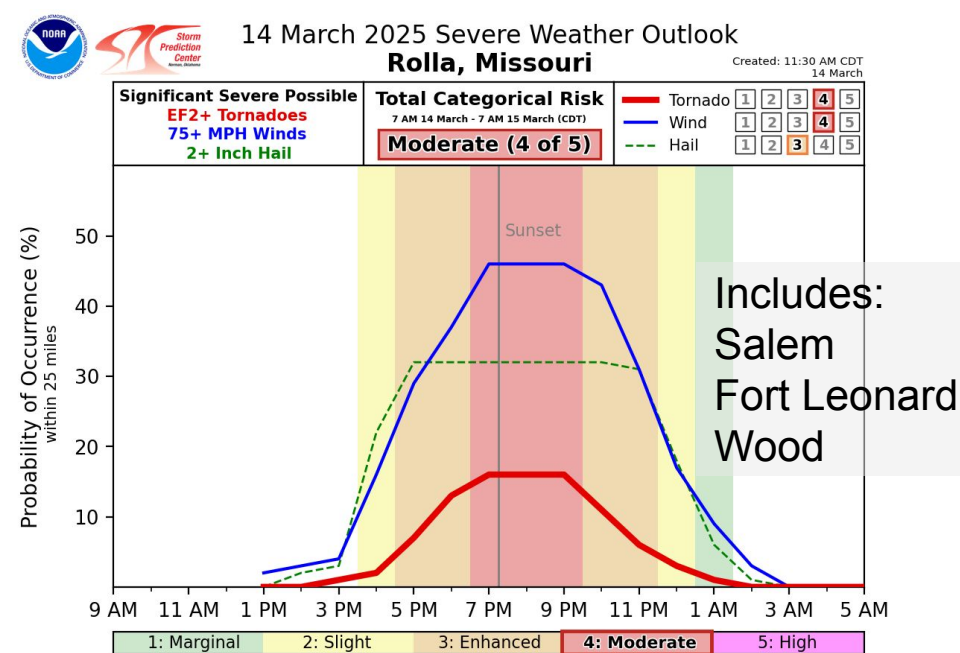
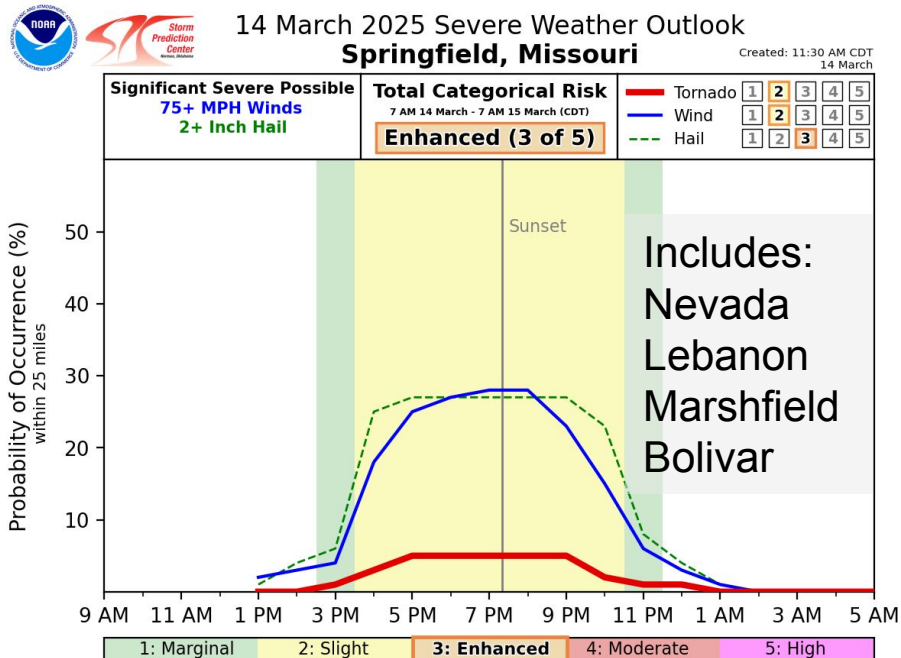
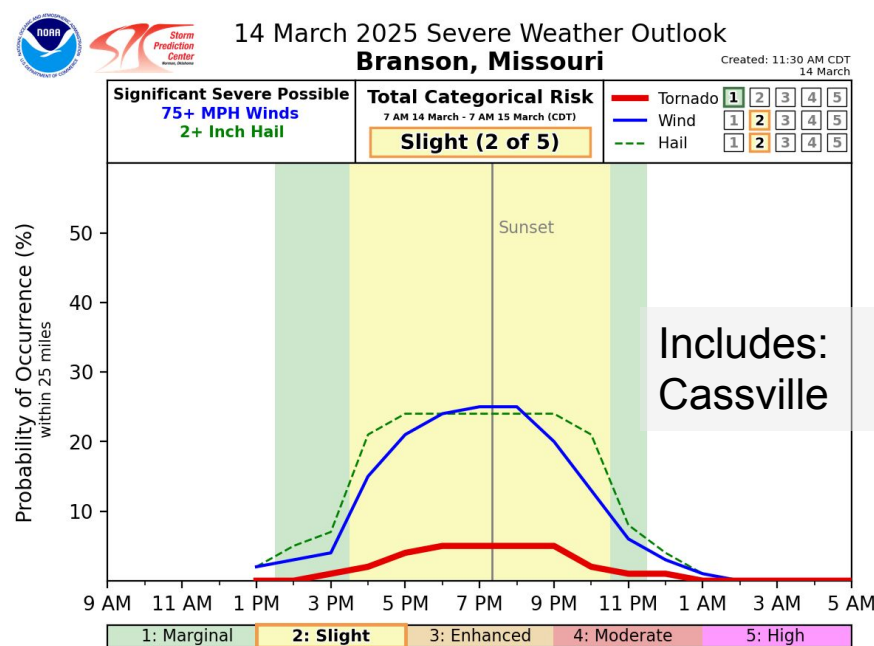
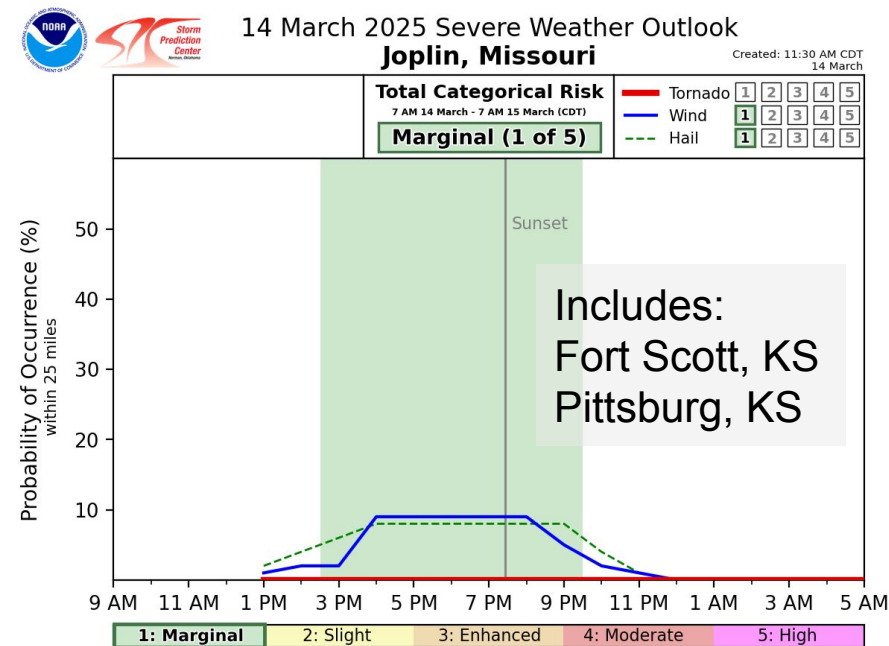
Some strong east of
Highway 65





Severe Hazard Timing/Hazards

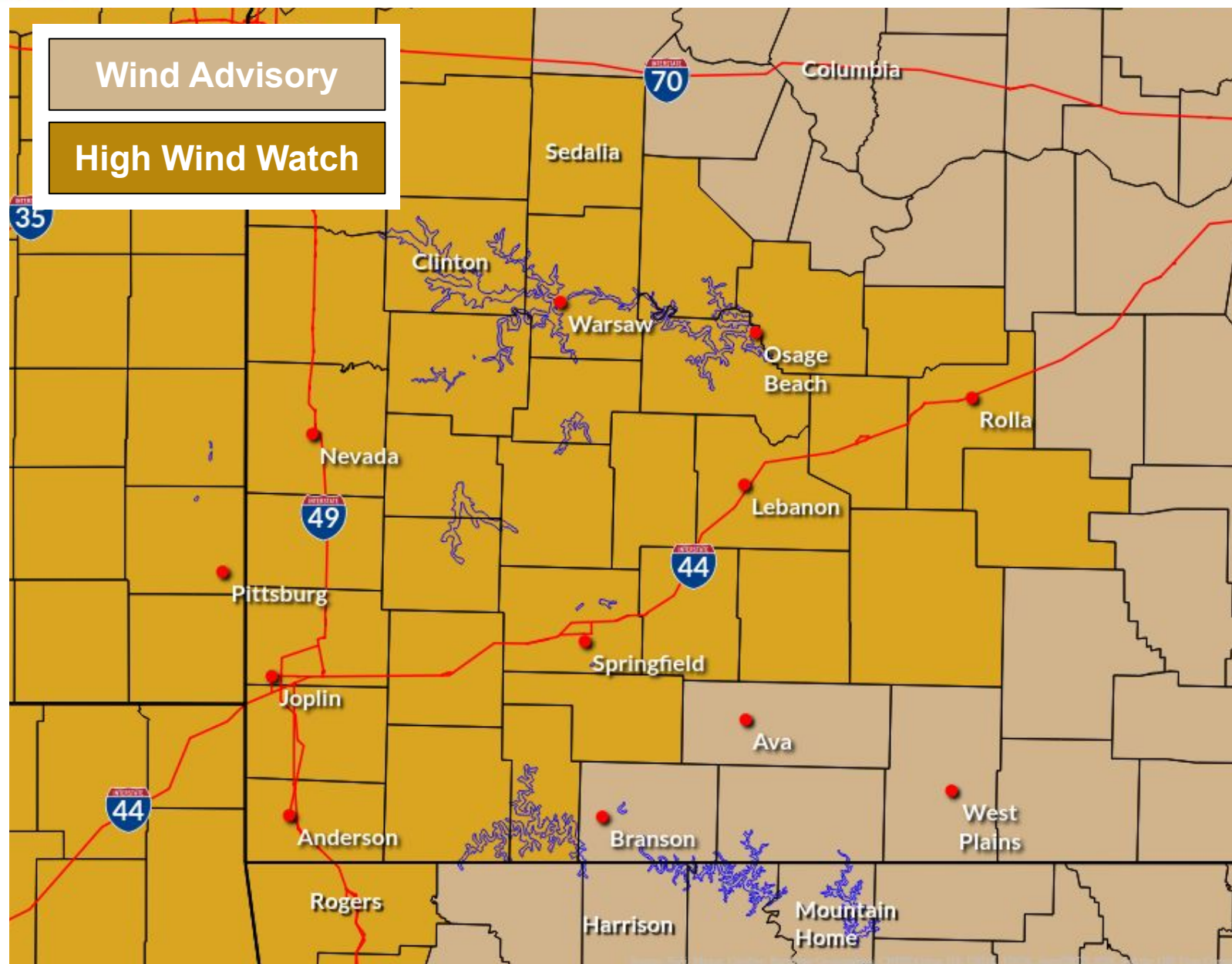
March 14, 2025
1:16 PM





Wind Headlines

March 14, 2025
1:16 PM



High Wind Watch: Now - 8 PM Fri

Sustained 30-40 mph
Gusts up to 60+ mph

Wind Advisory: Now - 1 AM Sat

Sustained 25-35 mph
Gusts up to 55 mph

Impacts:

- Difficult driving, especially high profile vehicles
- Tree/powerline damage
- Possible power outages
- Loose objects blown around

High Wind Watch and Wind Advisory Today



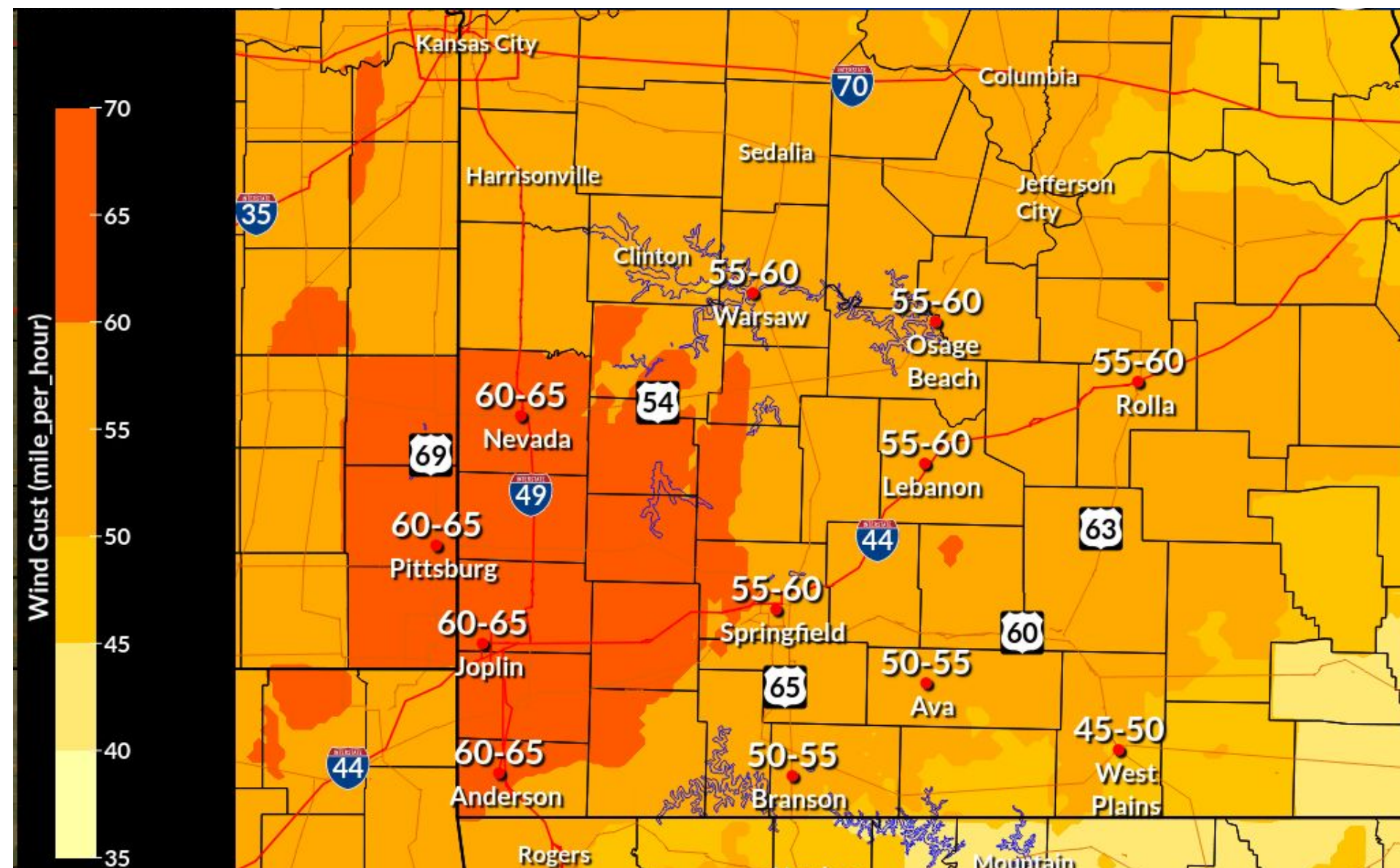
National Oceanic and
Atmospheric Administration
U.S. Department of Commerce

National Weather Service
Springfield, MO



Wind Gusts Today

March 14, 2025
1:16 PM



- Sustained south to southwest winds between 30-40 mph with gusts up to 50-65 mph are expected on Today.
- Infrequent gusts greater than 65 mph are possible.
- These winds will occur outside of any thunderstorms (gusts with any thunderstorms may be higher).
- **For reference, 58 mph winds is the criteria for a Severe Thunderstorm Warning.**

Wind Gusts Today



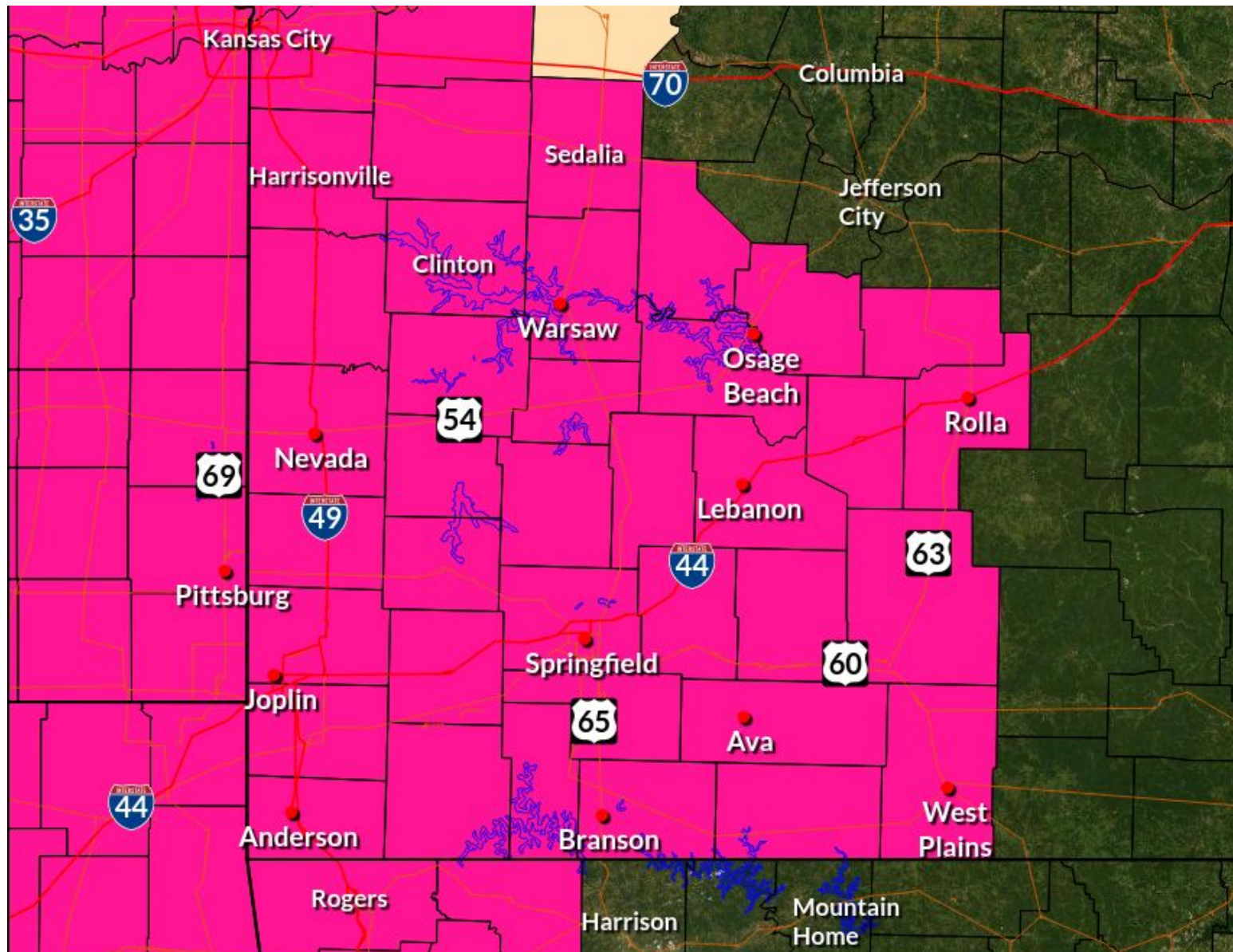
National Oceanic and
Atmospheric Administration
U.S. Department of Commerce

National Weather Service
Springfield, MO



Fire Danger and Headlines Today

March 14, 2025
1:16 PM



Red Flag Warning Today

Red Flag Warning: 10 AM - 1 AM Sat
Relative humidity as low as 10-25%
w/lowest RH's in the early evening into
the overnight hours
Winds 30-40 mph with gusts 50-65 mph

- Significant to Critically Extreme fire danger is expected Today in areas covered by the Red Flag Warning.
- This is due to very high winds and relative humidities of 10–25% as a dryline sweeps through the area.
- Fire control will be extremely difficult. Recent dry weather has already resulted in unusual fire spread and behavior this week.

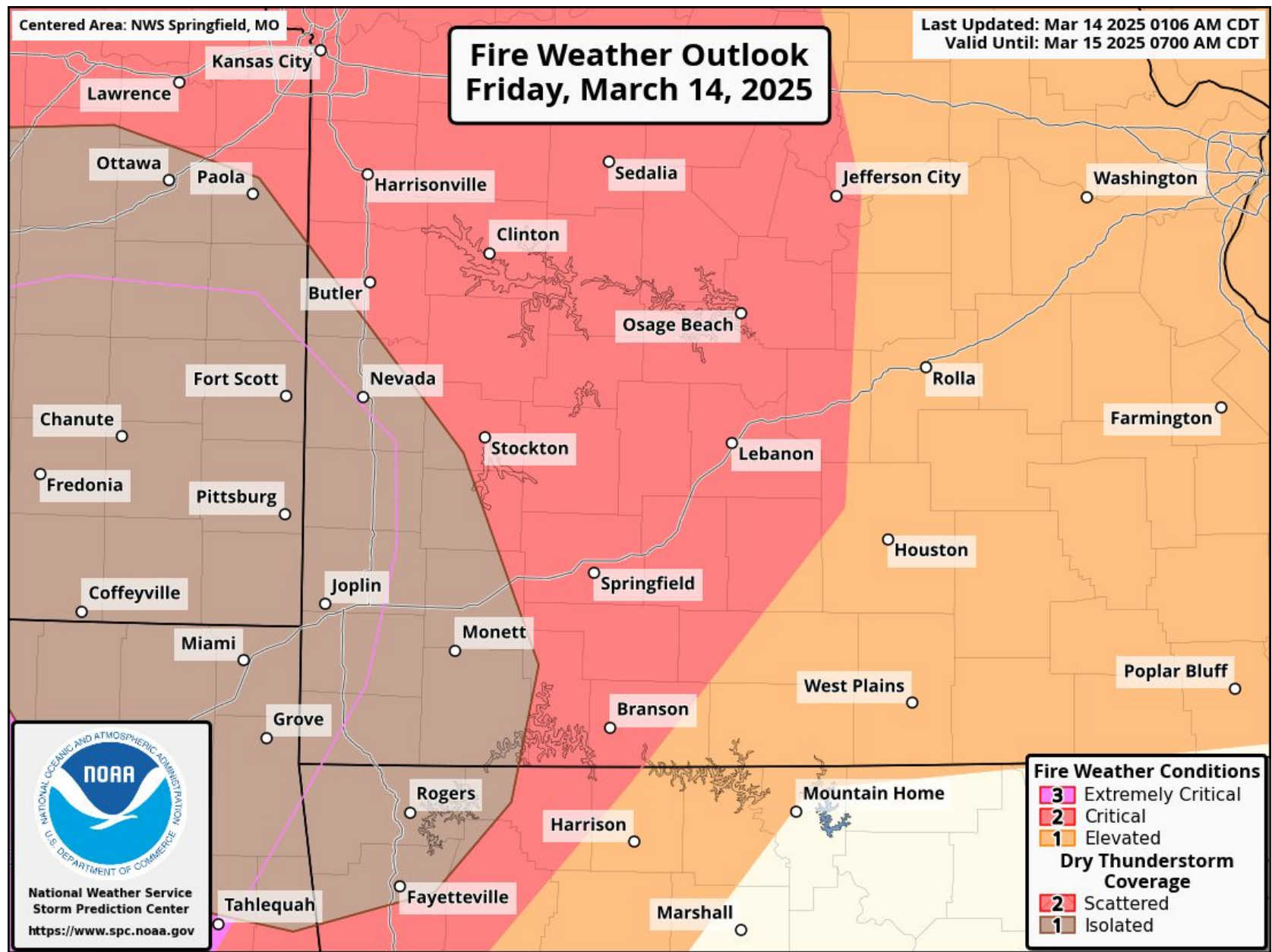
Any burning is strongly discouraged!





Extreme Fire Danger Today

March 14, 2025
1:16 PM



- Most Critically Extreme fire danger is along and west of I-49. Elevated (orange) to Critically Significant (red) fire danger expected along and west of Highway 63.
- There is also a low potential for isolated dry thunderstorms along and west of Highway 63 (brown color). This means that lightning could start fires.
- For context, our area has not received an “Extremely Critical” SPC Fire Weather Outlook before, highlighting a potential historic event.

Any burning is strongly discouraged!

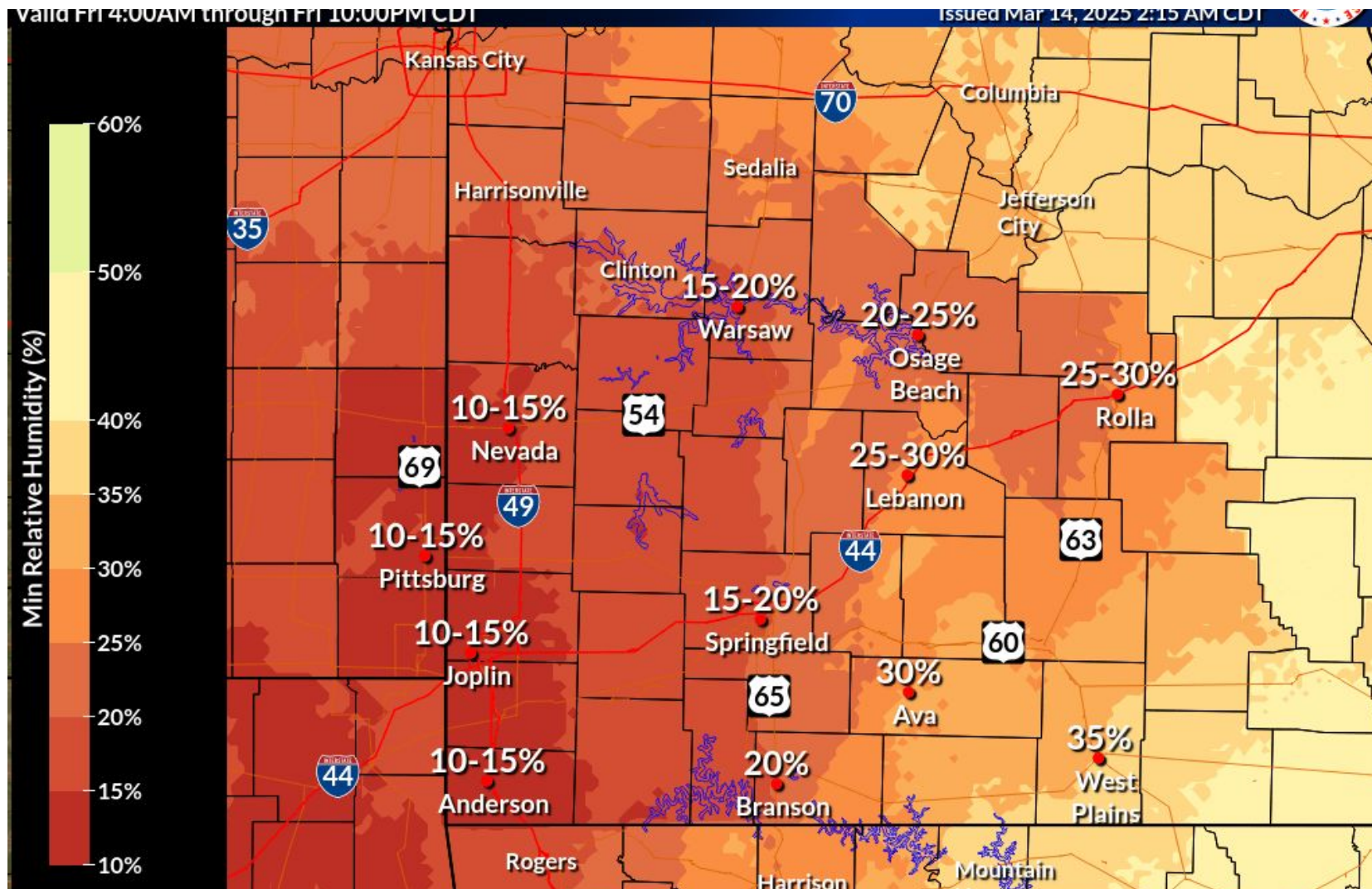
SPC Fire Weather Outlook





Relative Humidities Today/Saturday

March 14, 2025
1:16 PM



Minimum Relative Humidity Today

- Driest conditions expected west of Highway 65 between 2 PM and 11 PM.
- Relative humidity will slowly rise after 1 AM Saturday.
- 20-35% Relative humidity expected Saturday





Fire Danger This Weekend Into Next Week

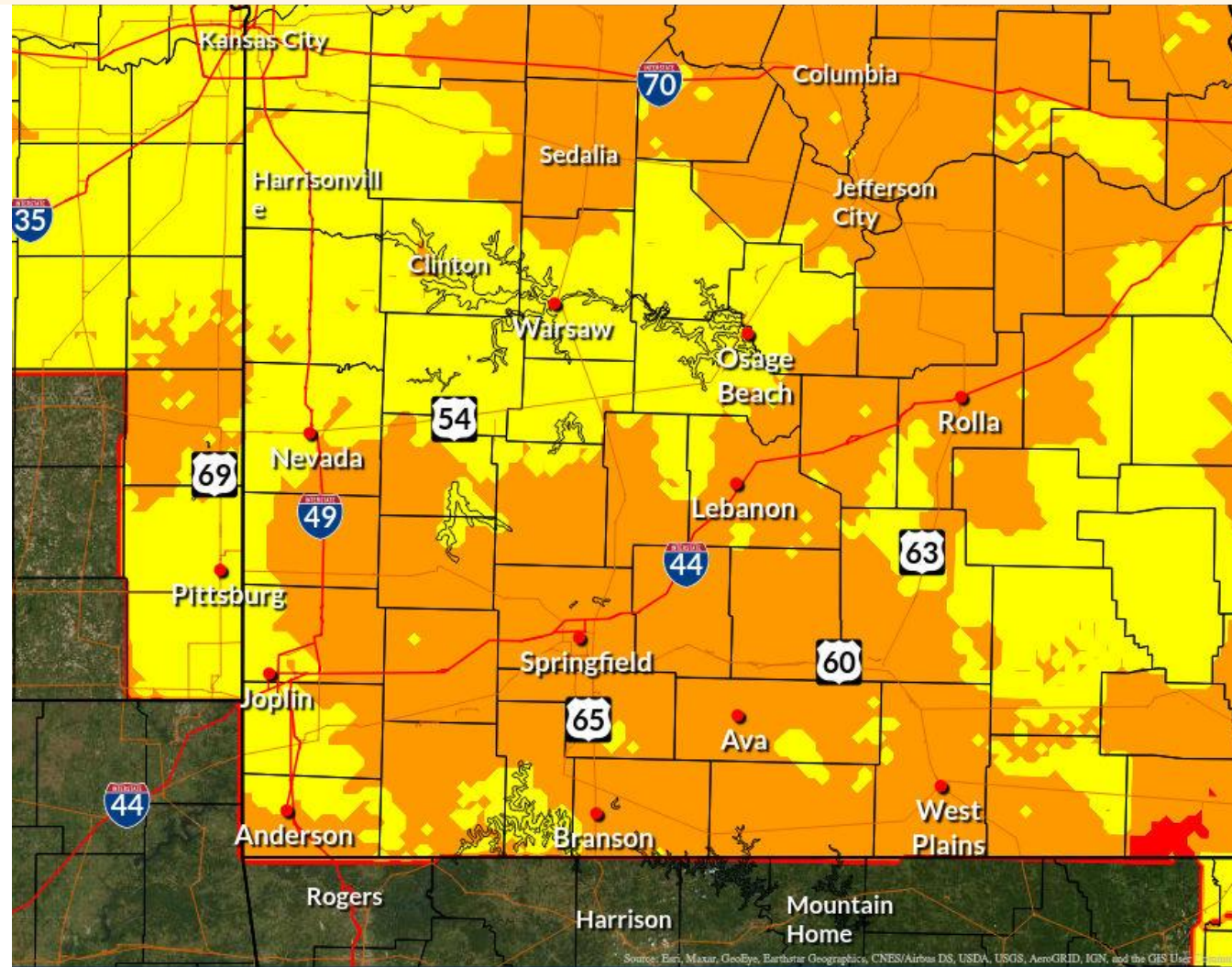
March 14, 2025
1:16 PM

Signal for fire weather conditions to continue this weekend into next week



Sunday

Humidity: 15-25% Wind Gusts: 15-25 mph



High

Very High

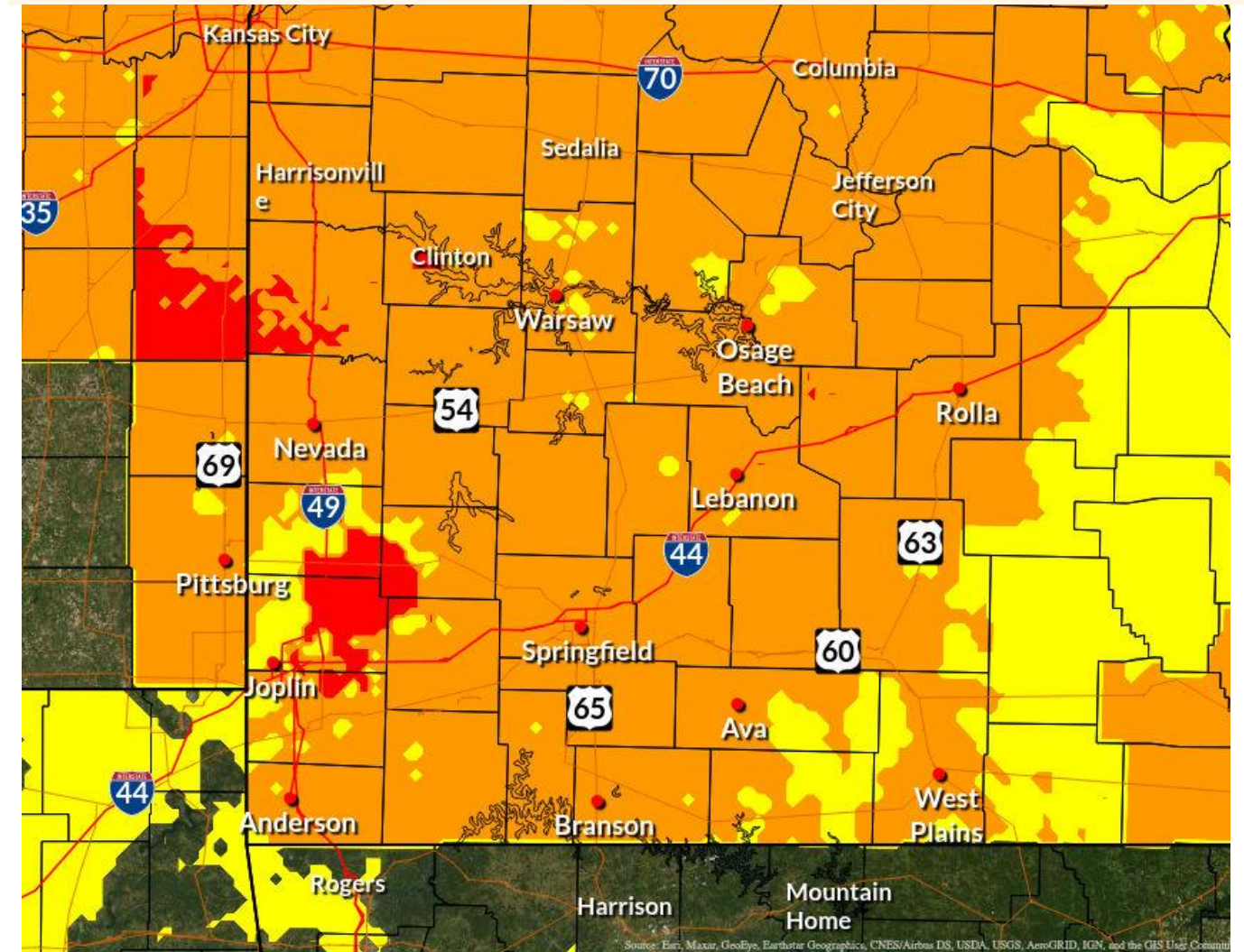
Significant

Extreme



Monday

Humidity: 20-30% Wind Gusts: 25-35 mph

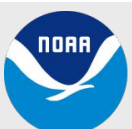


High

Very High

Significant

Extreme



National Oceanic and
Atmospheric Administration
U.S. Department of Commerce

National Weather Service
Springfield, MO



Fire Danger Next Week

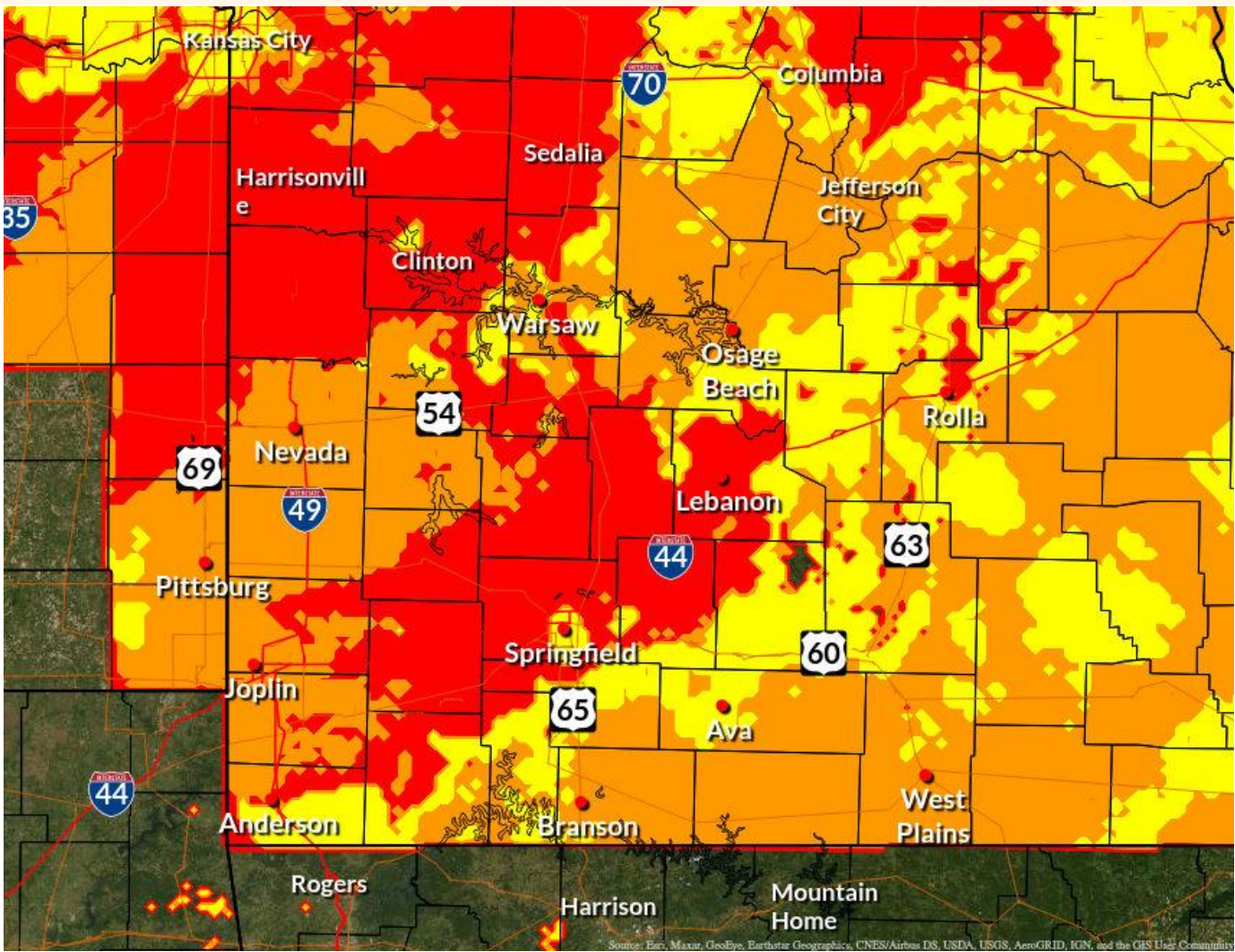
March 14, 2025
1:16 PM

Signal for fire weather conditions to continue into next week



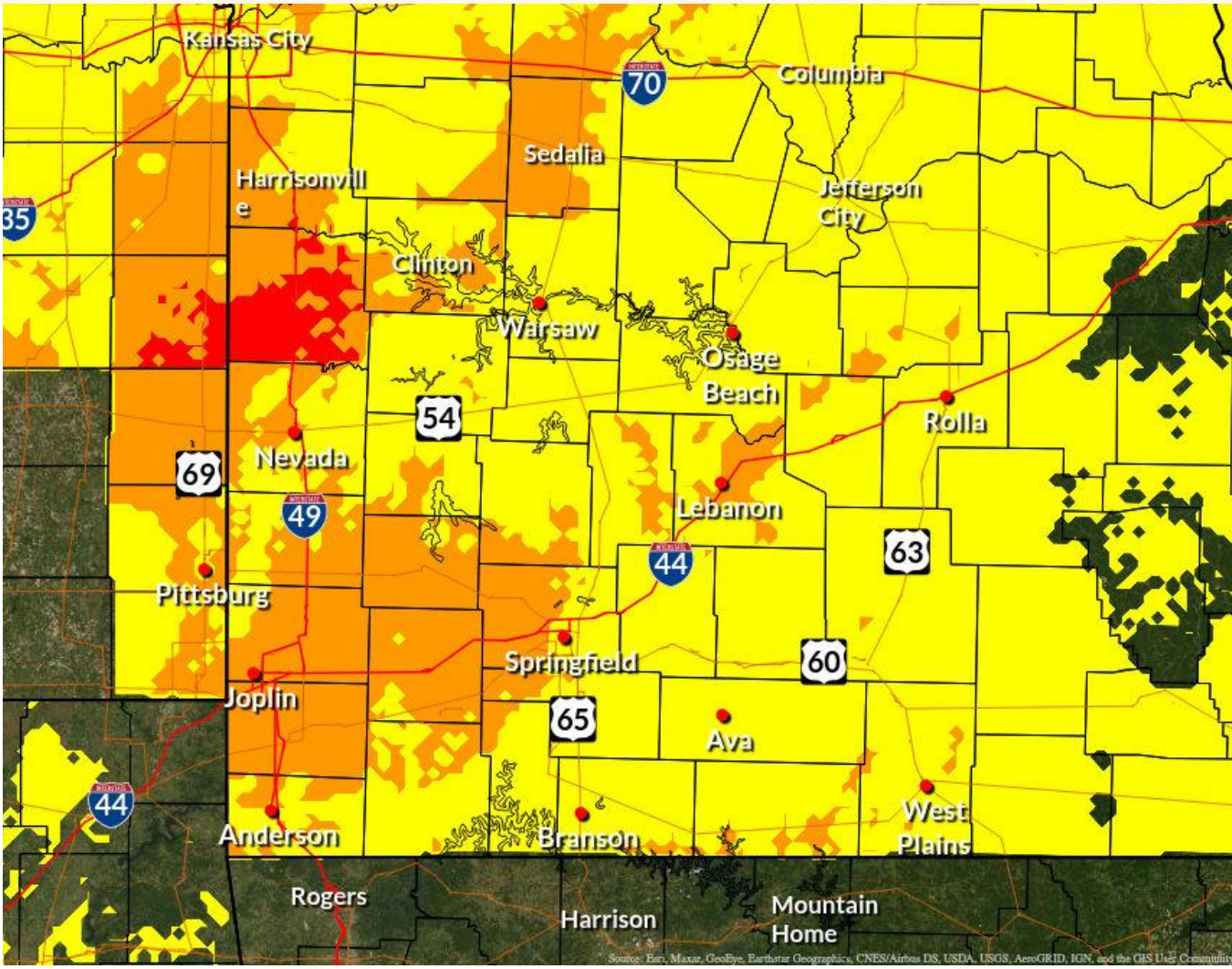
Tuesday

Humidity: 20-35% Wind Gusts: 30-40 mph



Wednesday

Humidity: 35-45% Wind Gusts: 25-35 mph



High

Very High

Significant

Extreme

High

Very High

Significant

Extreme



National Oceanic and
Atmospheric Administration
U.S. Department of Commerce

National Weather Service
Springfield, MO



Additional Resources

March 14, 2025
1:16 PM

For Additional Information

- [NWS Springfield Webpage](#)
- [IDSS Point Forecasts](#)
- [Graphical Hazardous Weather Outlook](#)
- [Fire Weather Dashboard](#)
- [NWS Springfield Fire Page](#)
- [NWS Spot Forecast Page](#)
- [SPC Convective Outlooks](#)
- [Submit Storm Reports](#)

Follow @NWSSpringfield



THUNDERSTORM WATCH

A Severe Thunderstorm Watch is issued when **a severe thunderstorm is possible.**

Stay tuned to forecast updates, monitor sky conditions, and know where to take shelter.

Be Prepared.



weather.gov

THUNDERSTORM WARNING

A Severe Thunderstorm Warning is issued when **a severe thunderstorm is happening or about to happen.**

Take shelter immediately!

Take Action!

STORE OR SECURE LOOSE ITEMS BEFORE STRONG WINDS



Patio furniture



Sports equipment



Trash cans



Trampolines



weather.gov



National Oceanic and
Atmospheric Administration
U.S. Department of Commerce

National Weather Service
Springfield, MO